

## Enabling Ink Maintenance Dialog for the 1024UVMVP Printer

The Manual Ink Maintenance function performs ink maintenance when it is required on the 1024UVMVP. The Color Byte RIP should be set to automatically prompt the user, prior to sending a print job, if it is necessary to perform this function. If manual ink maintenance is required, it needs to be performed prior to printing.

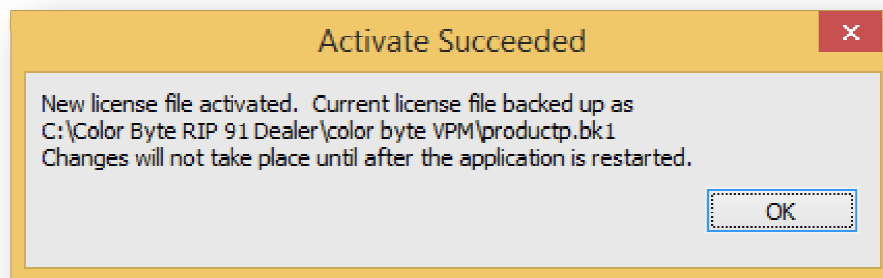
Any user who has installed an MVP device into Color Byte RIP 9.1 Build 3 prior to May 12<sup>th</sup>, 2014 will need to update their license files via the RIP and manually turn this dialog box ON. All License Files issued after May 12<sup>th</sup>, 2014 will have this option defaulted to ON.

Note: This is only for the 1024UVMVP Device in Color Byte RIP 9.1 Build 3.

### STEPS TO TURN ON THE INK MAINTENANCE DIALOG

#### I. UPDATE LICENSE FILES AND TURN ON DIALOG


- A. Open the Color Byte RIP 9.1 Build 3
- B. Go to Help > Update License File (Internet Connection Is Required)
- C. When the New License Files are activated, this dialog will appear

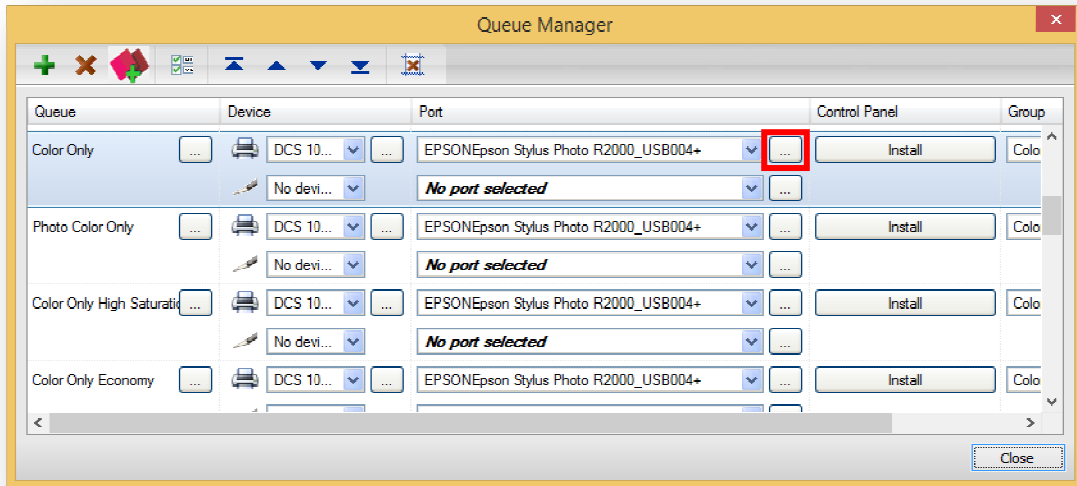


- D. **Restart** the RIP Program
- E. Go to **Tools > Options**
- F. Check **Show Ink Maintenance Dialog**
- G. Select **Save and Close**

## II. SET PORT SETTINGS TO INFINITE

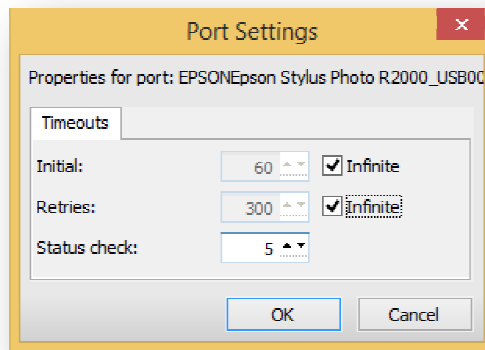
All Port Settings have default timeouts. If these timeouts are left at the default value, the user will have a smaller window to perform ink maintenance before a print job. To ensure the maximum time is allotted, the port settings should be changed to Infinite.

- A. Go to Queues > Manage Queues
- B. Be sure that the EPSON Stylus Photo R2000\_USB\*\*\*+ is selected for all ports
- C. Once the proper USB port is selected, click the  next to the printer port



- D. Check **Infinite** for both the **Initial** and **Retries Timeouts**.

Note: This will have to be done for all Queues separately. Also, if the port number changes, from ...004 to ...005 for example, the port settings will need to be adjusted.



## USING THE INK MAINTENANCE DIALOG PROPERLY

Every time a print job is sent, the RIP will check the printer to decide whether manual ink maintenance will be required. If it is determined that a manual ink maintenance process will need to be performed during a print job, the dialog box below will appear.

Before hitting **OK**, go to the LCD Touch Screen on the printer and perform the **Manual Ink Maintenance**. When the process is complete there will be a solid Green Light and the #1 or #2 error light **WILL NOT** be lit on the **Manual Ink Maintenance** screen. Select OK from the Printer Status Alert dialog box. The printer will perform a light head cleaning and then begin printing the job.

